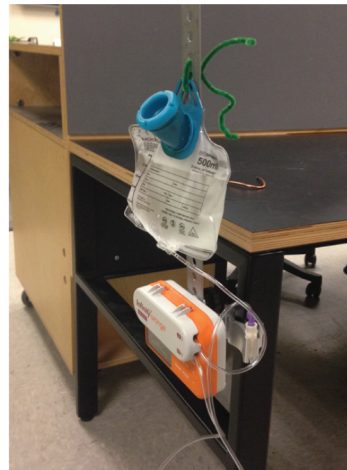
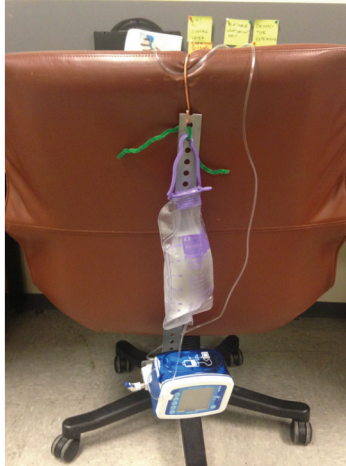


Figure 5.

Feeding Pump System



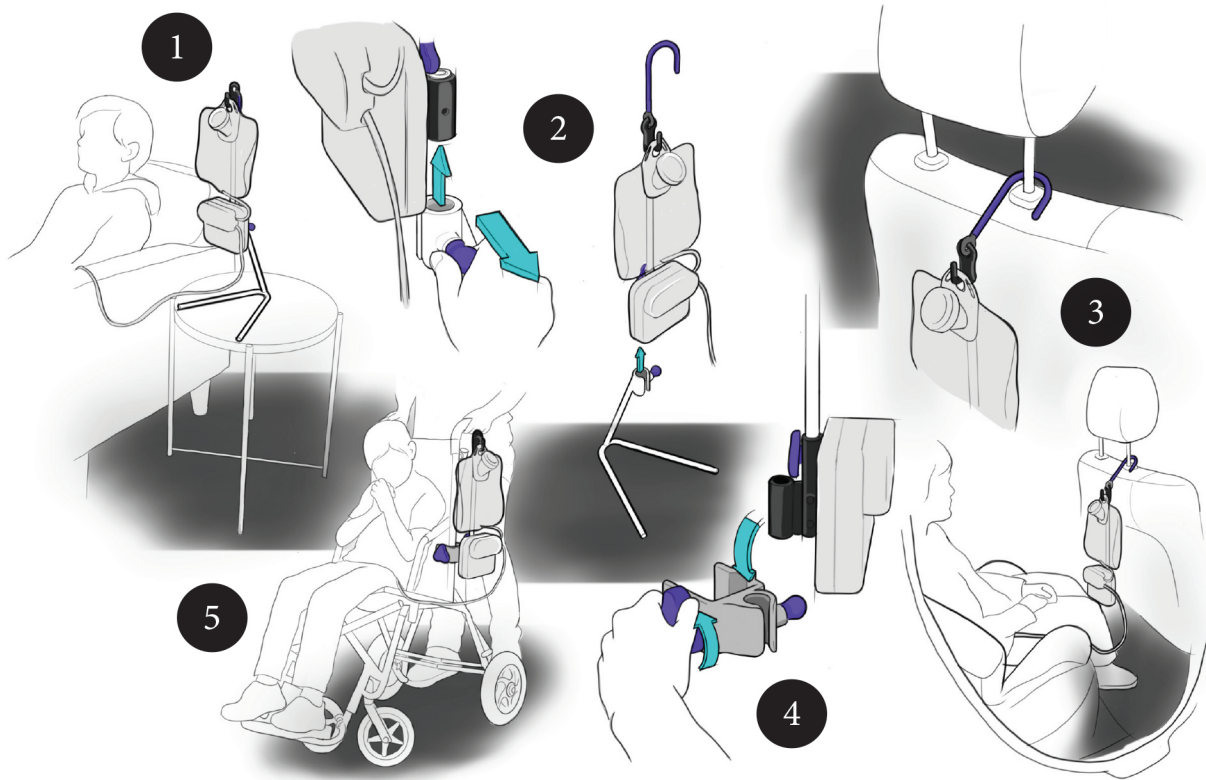


Figure 52. Illustration demonstrating functionality of the design

1) Attached to base, which is sitting on side table 2) Detaches from base with quick-release 3) Hangs from back of car seat 4) Attaches into clamp with quick-release 5) Clamp can be attached to wheelchair



Figure 53. **In-context rendering**



Figure 54. Final design in use with Infinity pump and Kangaroo Joey pump



Figure 56. **Final proof-of-concept model**

Final Model

A final proof-of-concept model was constructed for demonstration and testing purposes. This model was made from 7/16" aluminum rod for the base and center pole, 3D-printed nylon, 3D-printed metal, and off-the-shelf retractable spring plungers (Figure 56).